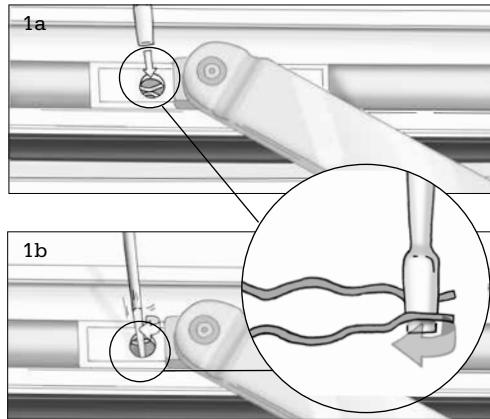
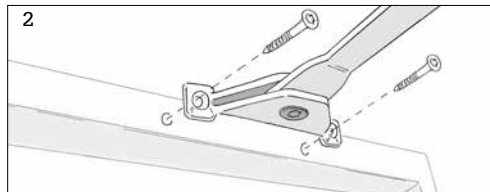


Replacement of friction brake in head

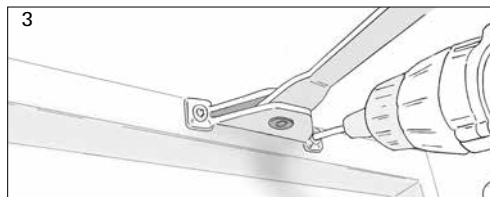
(VELFAC 200 alu / VELFAC 200i / VELFAC 200 ENERGY)



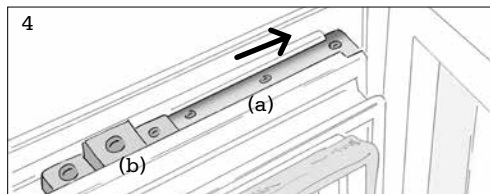
Release the existing friction brake by placing a screwdriver within the clip and turn the screw driver 90°. Now release the friction brake from the sash.



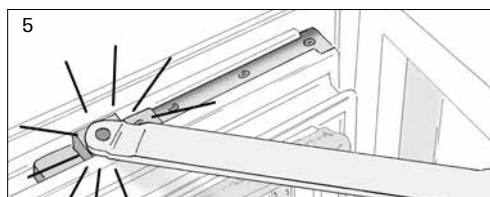
Dismount the old friction brake from the frame.



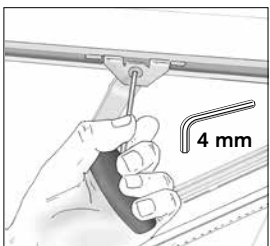
Fasten the new friction brake fittings to the frame using 5 x 40mm screws.



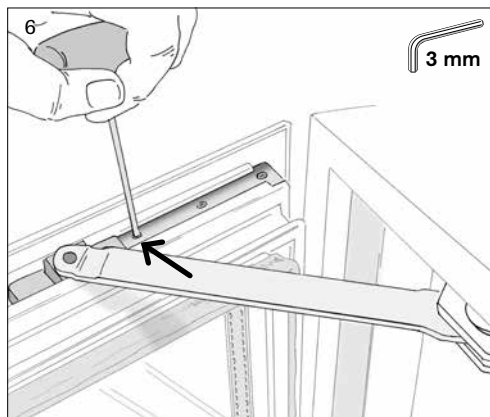
Push the stop (4a), designed for one to three screws, into the groove of the sash from the outside. Then push the steering block (4b) into the frame rebate (hole first).



Place the friction arm over the hole in the steering block and click it into place.



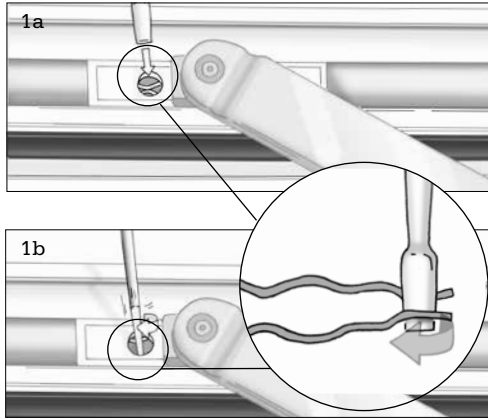
Adjusting the friction brake: Loosen or tighten the screw. Do not oil!



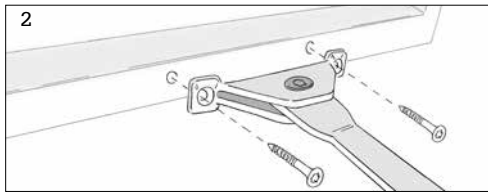
Place the stop ensuring that the window can open as required, however not exceeding exactly 90°. Tighten the hexagon socket screw(s) (1 to 3) of the stop.

Replacement of friction brake in cill

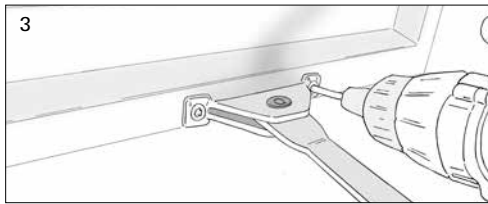
(VELFAC 200 alu / VELFAC 200i / VELFAC 200 ENERGY)



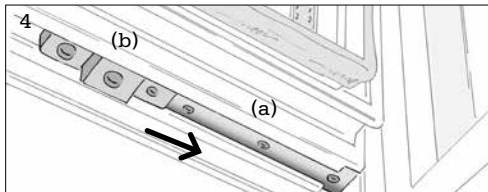
Release the existing friction brake by placing a screwdriver within the clip and turn the screw driver 90°. Now release the friction brake from the sash.



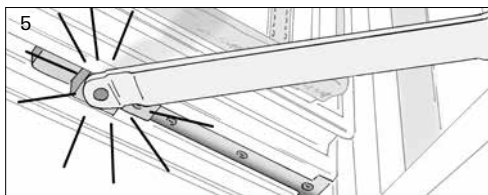
Dismount the old friction brake from the frame.



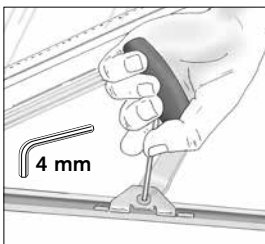
Fasten the new friction brake fittings to the frame using 5 x 40mm screws.



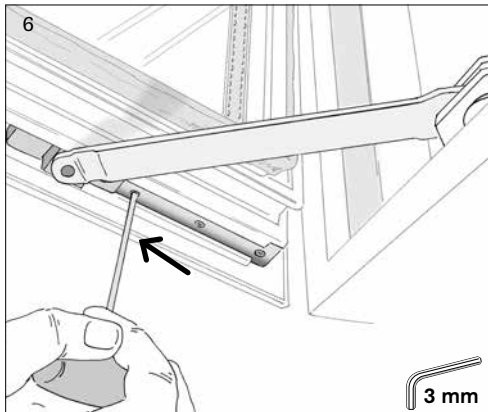
Push the stop (4a), designed for one to three screws, into the groove of the sash from the outside. Then push the steering block (4b) into the frame rebate (hole first).



Place the friction arm over the hole in the steering block and click it into place.



Adjusting the friction brake: Loosen or tighten the screw. Do not oil!



Place the stop ensuring that the window can open as required, however not exceeding exactly 90°. Tighten the hexagon socket screw(s) (1 to 3) of the stop.