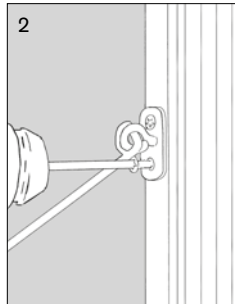
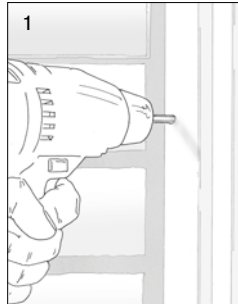


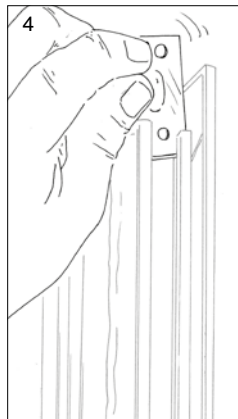
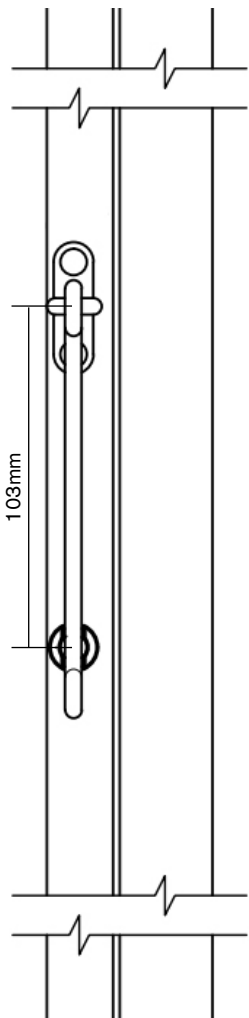
# Fitting of window stay (VELFAC 200 systems)



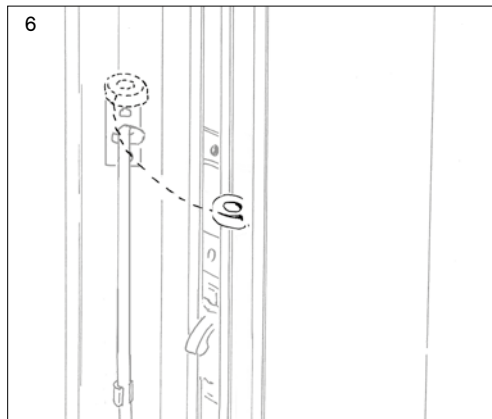
The window stay is positioned at the desired height on the front of the jamb - usually at the centre. Pre-drill using a  $\varnothing$  3mm drill (1) and fasten the window stay with screws (2).



Mark out for placing of the window stay retainer 103mm below the centre of the frame-part - please see drawing. Pre-drill using a  $\varnothing$  3mm drill and fasten the retainer with the screw.



Push the eye of the window stay into the groove of the window sash (4) and fasten it with the top edge approx. 5mm above the window stay (5).



Test before final installation that the eye does not conflict with the window stay when the door / window is closed.